

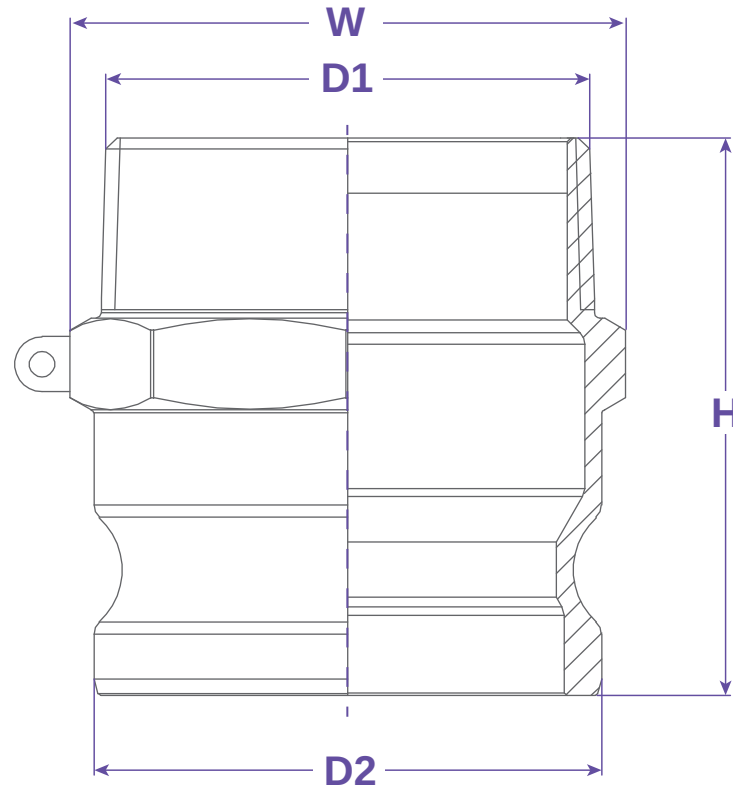


SEALFAST
THE SIMPLE SOLUTION

**COUPLINGS
& ACCESSORIES**



TYPE F



FEATURES & APPLICATIONS:

• General Uses:

A camlock fitting is a type of coupling that is used to connecting hose and or pipes together that transfers liquids, powders and granules. A straight through connection is made that maintains the pipe size and allows the free flow of materials being transferred.

Size	Working PSI	D1	D2	W	H	PART #
1" NPT	150	1.445	2.461	1.465		F100CI
1-1/2" NPT	150	2.102	2.972	2.126	2.972	F150CI
2" NPT	150	2.480	3.583	2.598	3.583	F200CI
3" NPT	150	3.602	4.016	3.740	4.016	F300CI
4" NPT	150	4.705	4.350	4.803	4.350	F400CI
5" NPT	75	5.728	4.449	5.748		F500CI
6" NPT	75	6.929	4.921	6.949	4.921	F600CI

WARNING: Cam & Groove Couplings should **NOT** be used with any compressed gas, including steam or air. Metal fittings should **NOT** be used with Polypropylene Cam & Groove. Dust Caps and Dust Plugs are **NOT** designed for pressure applications.

Note: All Seal Fast Cam & Groove Stainless Bodies are 316 Investment with 304 Handles.

TITLE **TYPE F - MALE ADAPTER X MALE NPT**

DISCLAIMER

All drawings and specifications are subject to change without notice. Drawings represent general dimensions of our products. Seal Fast cannot guarantee the dimensions in the drawing will exactly match those in the drawing. This drawing is the property of Seal Fast Inc. Copying or reproduction of this drawing is expressly prohibited.

MATERIAL

PLATED IRON

DRAWING NOT TO SCALE

PART

F...CI

